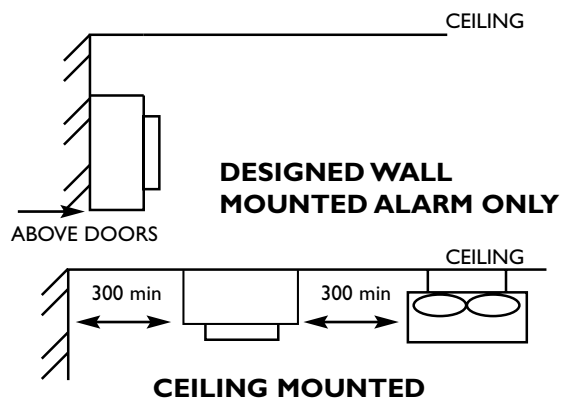


Positioning

Smoke alarms should be located in a circulation route such as the hall or landing, so that there is one not more than 7.5m from every door of a habitable room

In order to operate as effectively as possible care should be taken when positioning smoke detectors. It is recommended they are positioned as shown:



Do not position above a heater or stairwell. Remember it must be easy and safe to reach for maintenance purposes.

Maintenance

Building Control have no authority to ensure that smoke alarms are maintained. It is vitally important that your smoke alarm is regularly checked. Further information can be obtained from the manufacturer's instructions. For large houses (any storey over 200m²) an L2 system to BS5839:Pt1 1988 is required.

If you need to contact us

Building Control
East Hampshire District Council
Penns Place
Petersfield GU31 4EX

Tel: (01730) 234207
Fax: (01730) 234210

Other leaflets are available on the following

- Domestic garages
- Conservatories, greenhouses and porches
- Roofspace Conversions
- Regularisation Certificates
- Energy ratings
- Do I need approval?



Smoke Detectors in Dwellings

(under 200m² floor area per storey)

Advisory leaflet 3

Revised Feb 02

Smoke Detectors in Dwellings

In the UK a substantial number of people die and others are injured in domestic fires every year, many from smoke inhalation. It is widely accepted that this could be reduced by installing and maintaining smoke alarms within dwellings.

Purchasing a Smoke Alarm

When purchasing a smoke alarm ensure it complies with a British Standard or the International Standard Organisation (ISO) standard. For self-contained smoke alarms they must comply with BS 5446 Part 1 1990 for automatic fire detection, and to BS 5839 Part 1 1988 for an alarm system.

Never buy a second-hand smoke detector. Look for the BS kitemark or the CE mark with the standards displayed.

Where are Self Contained Smoke Alarm Systems Required?

- All new dwellings

NB In all new dwellings the smoke alarms must be permanently wired to an electric circuit.

- In roofspace conversions

It is recommended that the installation of a smoke detector is done by a qualified person, eg a registered electrician. Self contained smoke alarms are not recommended for use in kitchens, garages or places where steam, condensation or fumes could give rise to false alarms. More appropriate and effective detectors are available for such situations, eg heat detectors.

Detectors should be interlinked to form a system and not separate units.

Location of Smoke Alarms

A high standard of protection can be provided by installing detectors in the kitchen and lounge areas. In a single storey 2/3 bedroom dwelling, a single smoke detector may be adequate if sited in the main circulation area (see figure 1). In a typical two storey dwelling smoke detectors should be installed both at ground and at landing levels. Therefore at least two smoke alarms will be required (see figure 2)

FIGURE 1

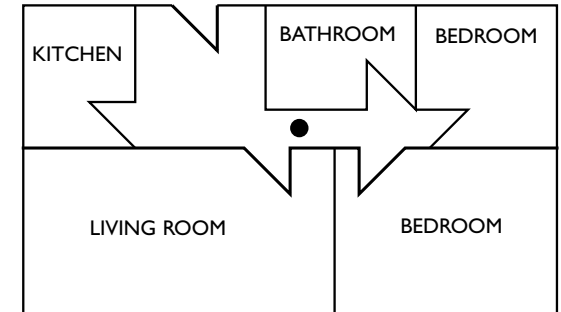


FIGURE 2

