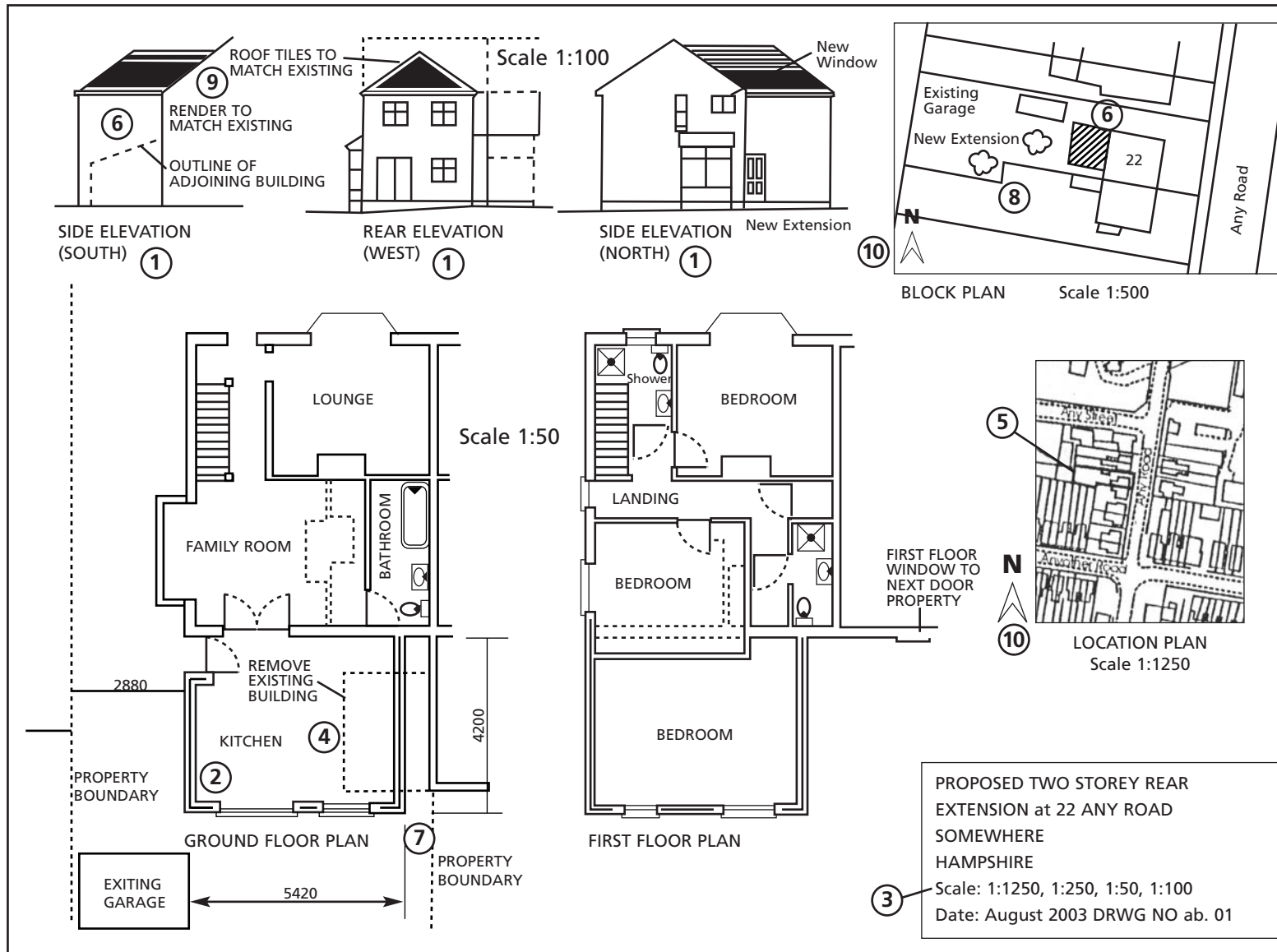


Example Plans

The drawing shows the plans required for a typical two-storey rear extension. Note that the plan has been photographically reduced. The notes describe some of the important points.



1. Include all elevations and floor plans of your extension.
2. Highlight new work, using colour or hatching.
3. Each plan must be drawn to a metric scale which should be stated. Any dimensions should be included on the plans in metres.
4. Use dotted or broken lines to show the position of existing buildings to be demolished.
5. Outline your site in red on the location plan.
6. Make sure the position of adjacent properties is accurate on the block plan and show the siting of the proposed work in red or hatching (all copies must be drawn to scale).
7. Show the precise position of the boundary.
8. Trees to be retained or felled should be shown.
9. Mark up the drawings to show what building materials are proposed.
10. Show the north point on the plan.