

IF YOU OR SOMEONE YOU KNOW IS AFFECTED BY CRIME, HERE'S WHAT TO DO:

REPORTING CRIME



In an emergency: dial **999**

Less urgent: call **101** or report online at: hampshire.police.uk

Report crime anonymously: call Crime-stoppers on: **0800 555 111** or report at: crimestoppers-uk.org

Fraud or Cyber Crime: call: **0300 123 2040** or report at: actionfraud.police.uk

Hate Crime: Go to: report-it.org.uk/home

CONTACT DONNA JONES,
POLICE AND CRIME COMMISSIONER

hampshire-pcc.gov.uk/contact-us

@hantspcc

Hampshire PCC

01962 871595

opcc@hampshire.police.uk

Keep up-to-date and sign up to Donna's **FREE** monthly online newsletter here:



CRIME PREVENTION



Be alerted to crimes in your area: hampshirealert.co.uk iowalert.co.uk

Contact Neighbourhood Watch: ourwatch.org.uk

Find out about Cyber Ambassadors, keeping children and young people safer online: hampshire-pcc.gov.uk/cyber-ambassadors

For crime prevention advice: police.uk/pu/advice-crime-prevention

SUPPORT FOR VICTIMS



Victim Care Service

If you've been a victim of crime or affected by crime in Hampshire or the Isle of Wight and need support, call the Victim Care Service on **0808 178 1641** (open Monday to Saturday from 8am to 8pm) email: hub.hiow@victimsupport.org.uk or visit: hampshireiowvictimcare.co.uk

Restorative Justice

Restorative Justice gives victims an opportunity to communicate with the person responsible for the offence. To find out more call **0800 043 8785** or visit: rjhampshire.org.uk

Visit hampshire-pcc.gov.uk for the latest news and updates from your PCC.

HANTSPCC

Announcement on:
50 MORE COPS

D O N N A J O N E S

**POLICE & CRIME
COMMISSIONER**

H A M P S H I R E & I S L E O F W I G H T

Investing in Policing to Meet Local Needs and Cut Crime

2023/24



As your Police and Crime Commissioner I am committed to ensuring your police precept is spent wisely and delivers best value for money. This year we find ourselves in a challenging economic environment with inflation; pay costs; utilities and fuel costs all rising. In spite of this I am committed to recruiting more police officers.

That means this year your council tax will go towards the recruitment of 50 extra police officers, improving police visibility in your neighbourhood. **More police officers, means more crimes being investigated and your community being safer.**

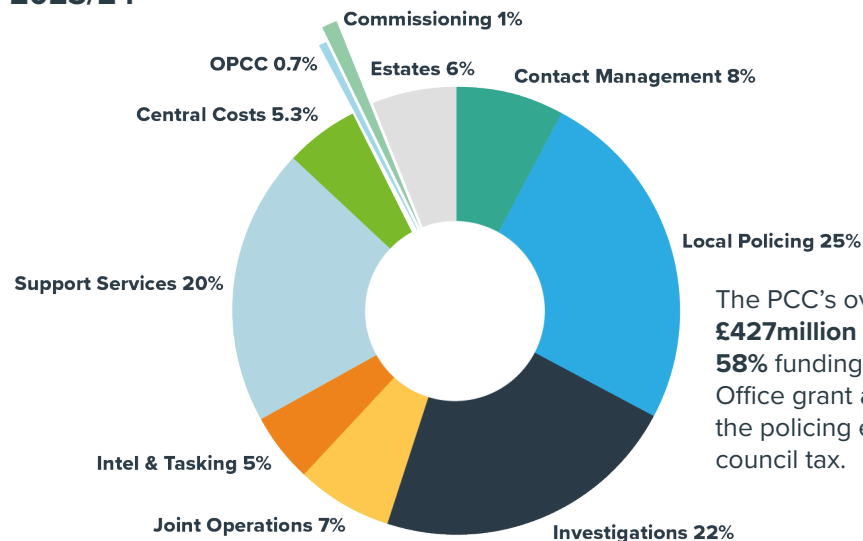
My commitment is continuing to ensure that the police are tackling the crimes that matter to you the most such as anti-social behaviour, burglary, serious violence and knife crimes, and to ensure police visibility on your streets.

Thank you for your continued support of Hampshire & Isle of Wight Constabulary.



Donna Jones
Police and Crime Commissioner

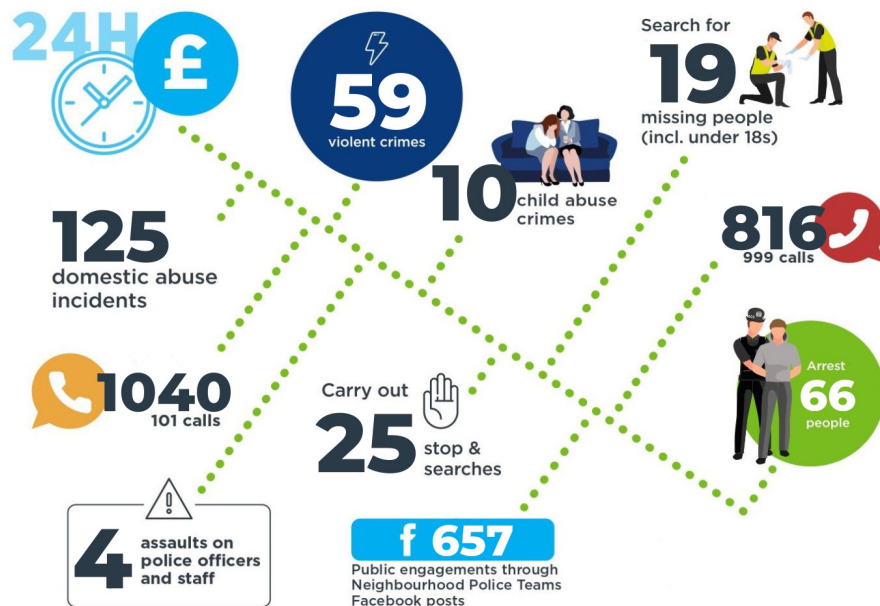
TOTAL COST OF POLICING 2023/24



The PCC's overall budget of **£427million** is made up of **58%** funding from the Home Office grant and **42%** is from the policing element of your council tax.

A DAY IN THE LIFE OF HAMPSHIRE & ISLE OF WIGHT CONSTABULARY

Illustrative figures from 2022



Band	A	B	C	D	E	F	G	H
Monthly Increase £	0.83	0.97	1.11	1.25	1.53	1.81	2.08	2.50
Annual Increase £	10.00	11.67	13.33	15.00	18.33	21.67	25.00	30.00

50 MORE COPS

This year the 6.34% increase in your police precept will provide an additional £12.29million for policing services. The money raised will go towards recruiting an extra 50 police officers. As part of the Government's national police uplift programme Hampshire & Isle of Wight Constabulary has recruited 498 extra officers. I have delivered on my promise to recruit an extra 102 police officers, bringing the total to 600, however you have told me you want to see more police. That's why I am committed to funding an **additional 50 police officers for 2023/24 bringing the total to 650.**

PREVENTING CRIME

I am committed to improving police visibility and ensuring officers have the right technology and equipment to be the best crime-fighters possible. To support this, I commission more than £9million of support services per year from Ministry of Justice grants which aim to reduce crime, specifically:

- Tackle the root causes of crime, especially with young people
- Prevent violent crime through my Violence Reduction Unit
- Ensure victims of crime have the support they need
- Prevent offending and reoffending through perpetrator intervention programmes
- Invest in CCTV and lighting to make your streets safer

My Police and Crime Plan 'More Police, Safer Streets' explains how I work with partners to tackle the crimes that matter to you and cause the most harm.