

Brownfield Land Register 2023

**East
Hampshire**
DISTRICT COUNCIL

December 2023

Brownfield Register: Part 1

This is the fifth brownfield land register for East Hampshire District (excluding the South Downs National Park).

Sites have been identified from;

- Land Availability Assessment (LAA, 2023)
- Call for sites during the consultation on the Draft Local Plan (Regulation.18) (Feb - March 2019)
- Further site suggestions made during the Local Plan Large Development Sites Consultation (Regulation. 18) (Sept – Oct 2019)
- Any further sites identified up to end of March 2023.

This brownfield register is base dated April 2023.

Those sites that are previously developed (brownfield), meet the site criteria (as set out in the [Town and Country Planning \(Brownfield Land Register\) Regulations 2017](#)) and are considered developable are listed in Part 1 of the brownfield land register below.

For clarification, these are sites where the entire site meets the definition of previously developed land (brownfield), is of at least 0.25 hectares or capable of supporting at least 5 dwellings, and are suitable, available and achievable for residential development.

Table 1: Part 1

Brownfield Land Register Site Reference	LAA site/PP reference	Site Address
BFL/001	LAA/AL-039	Rogers Court Car Park, Alton
BFL/002	LAA/AL-038	Alton Convent School Car Park, Alton
BFL/003	LAA/AL-003	St Johns Works, Station Road, Alton
BFL/004	LAA/CL-005	Classic Car Showroom, 33 South Lane, Clanfield
BFL/005	LAA/HD-016	Blendworth Lane Car Park
BFL/006	LAA/HD-033	54 Portsmouth Road, Horndean
BFL/007	LAA/LIP-022	Ajax & Plowden House, Haslemere Road, Liphook
BFL/008	LAA/WHI-014	Sacred Heart Church and Nursery
BFL/009	LAA/WHI-025	Guadaloupe Car Park
BFL/010	LAA/LIP-049	Mayfield House Care Home, Liphook
BFL/011	27542/004	Kingshead, Market Street, Alton
BFL/012	LAA/LIP-043	Land at 38-40 Station Road, Liphook

Brownfield Register: Part 2

Part 2 is a subset of Part 1 of the register. Entry of a site in Part 2 of the register grants permission in principle for residential development.

East Hampshire District Council has prepared Part 1 of the brownfield land register as required by the regulations. Part 2 of the brownfield land register will be published if the Council decides to grant planning permission in principle for the site included in Part 1, following the criteria set out in the [Town and Country Planning \(Brownfield Land Register\) Regulations 2017](#))



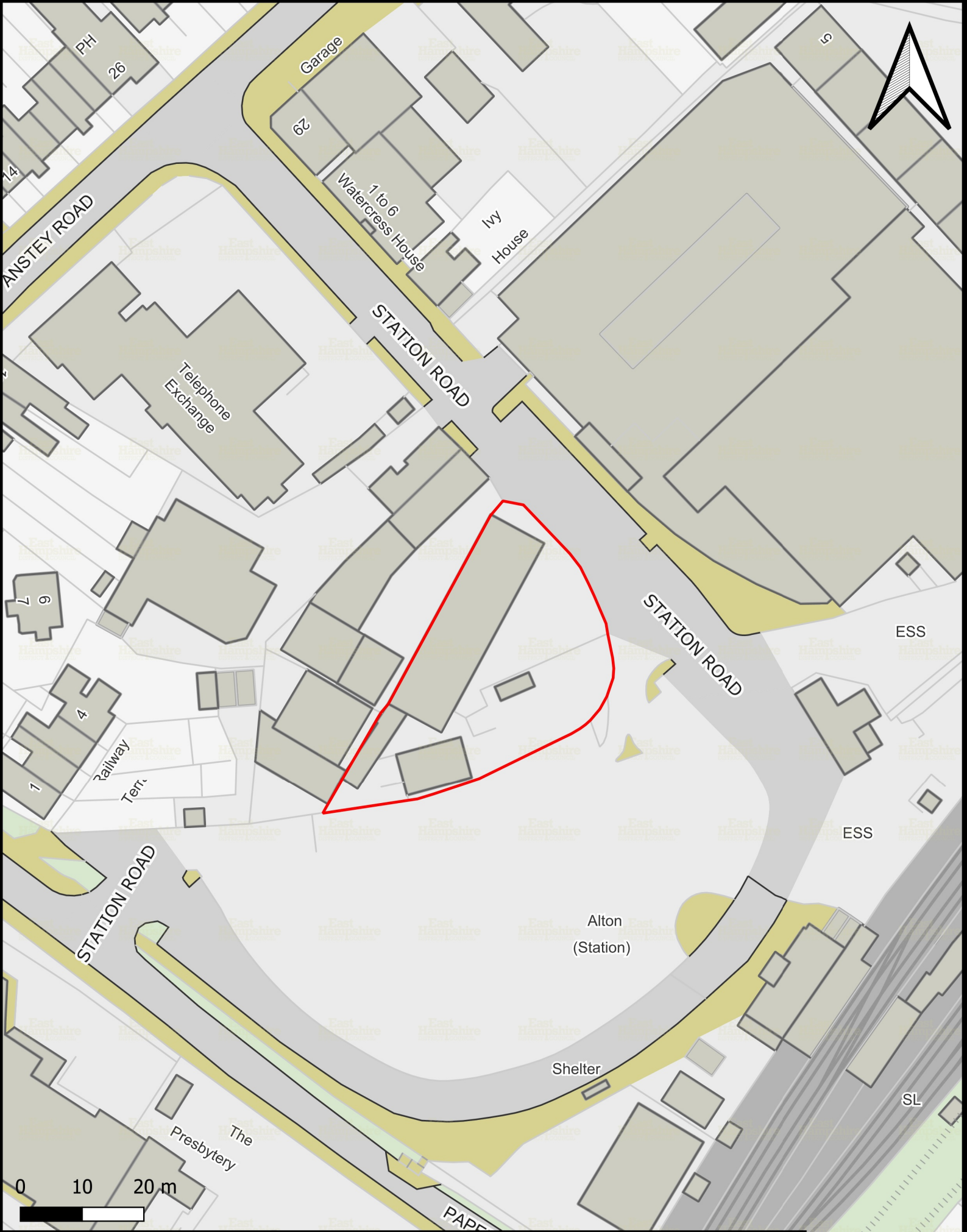
Brownfield Land Register Part 1- Rogers Court Car Park, Alton (BFL/001)



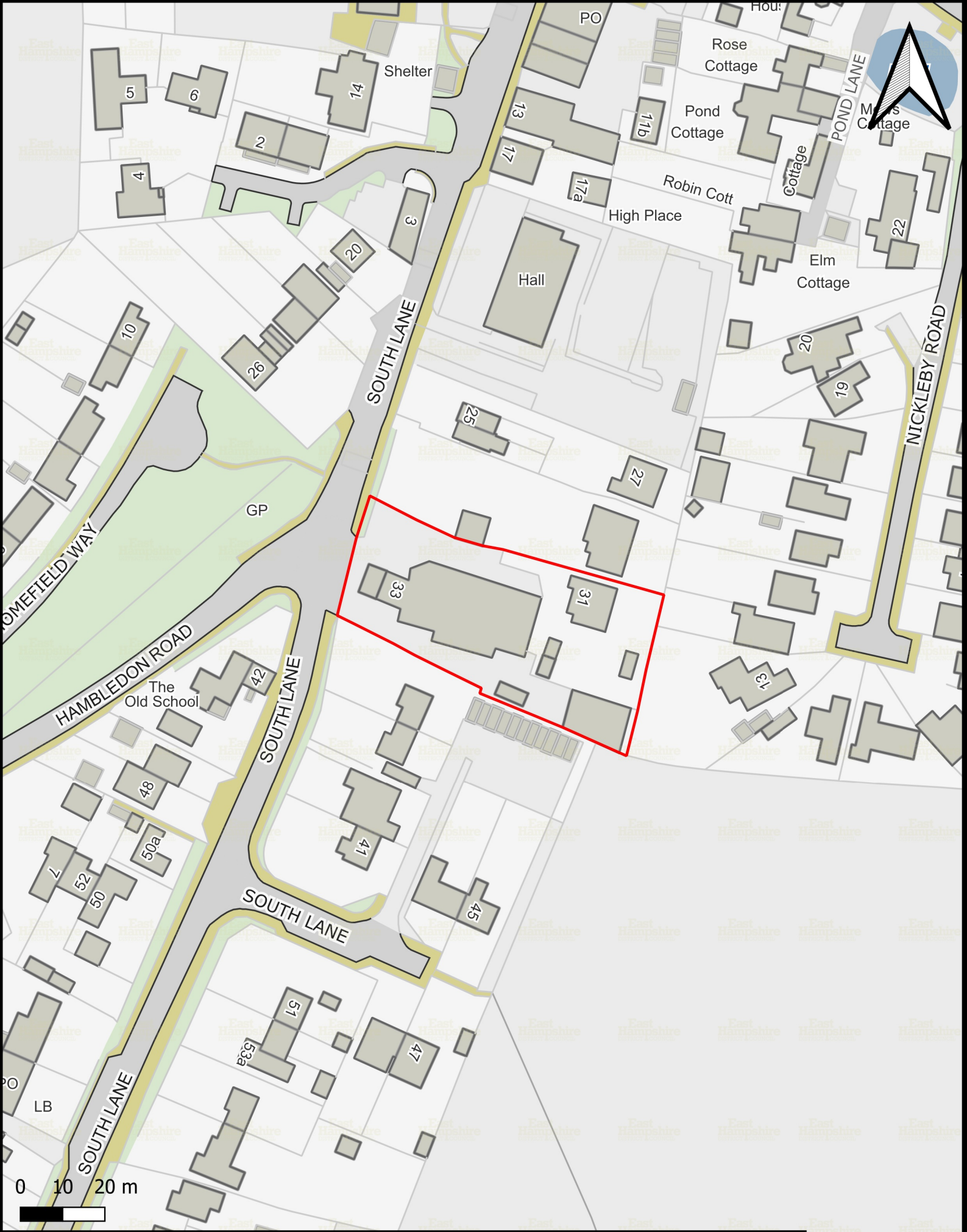


**Brownfield Land Register Part 1- Alton
Convent School Car Park (BFL/002)**



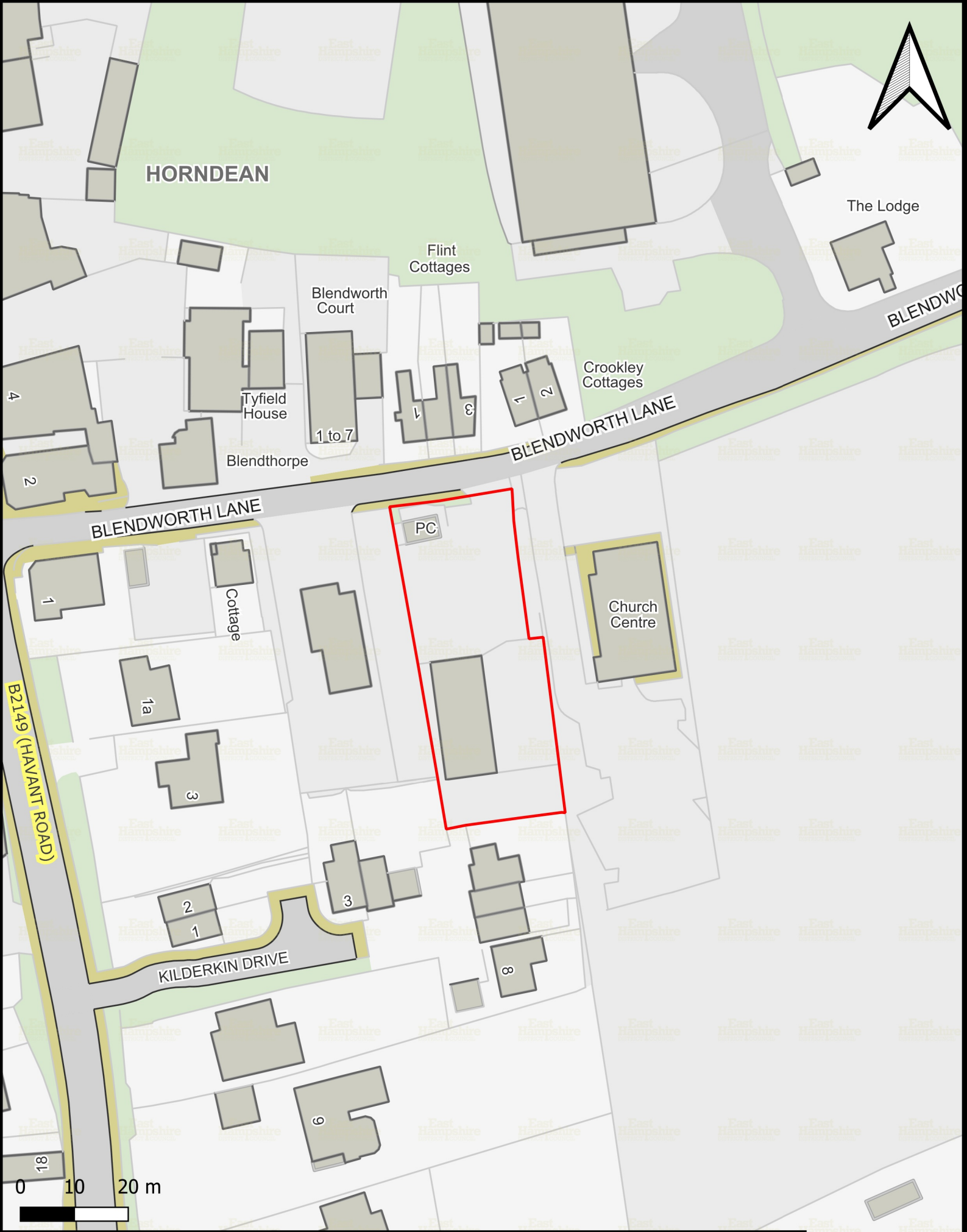


Brownfield Land Register Part 1- St John's Works, Station Road, Alton (BFL/003)



Brownfield Land Register Part 1- Classic Car Showroom, 33 South Lane, Clanfield (BFL/004)





HORNDEAN

The Lodge

Flint Cottages

Blendworth Court

Tyfield House

Crookley Cottages

1 to 7

BLENDWORTH LANE

Blendthorpe

BLENDWORTH LANE

PC

Church Centre

Cottage

1a

3

2

1

3

8

KILDERKIN DRIVE

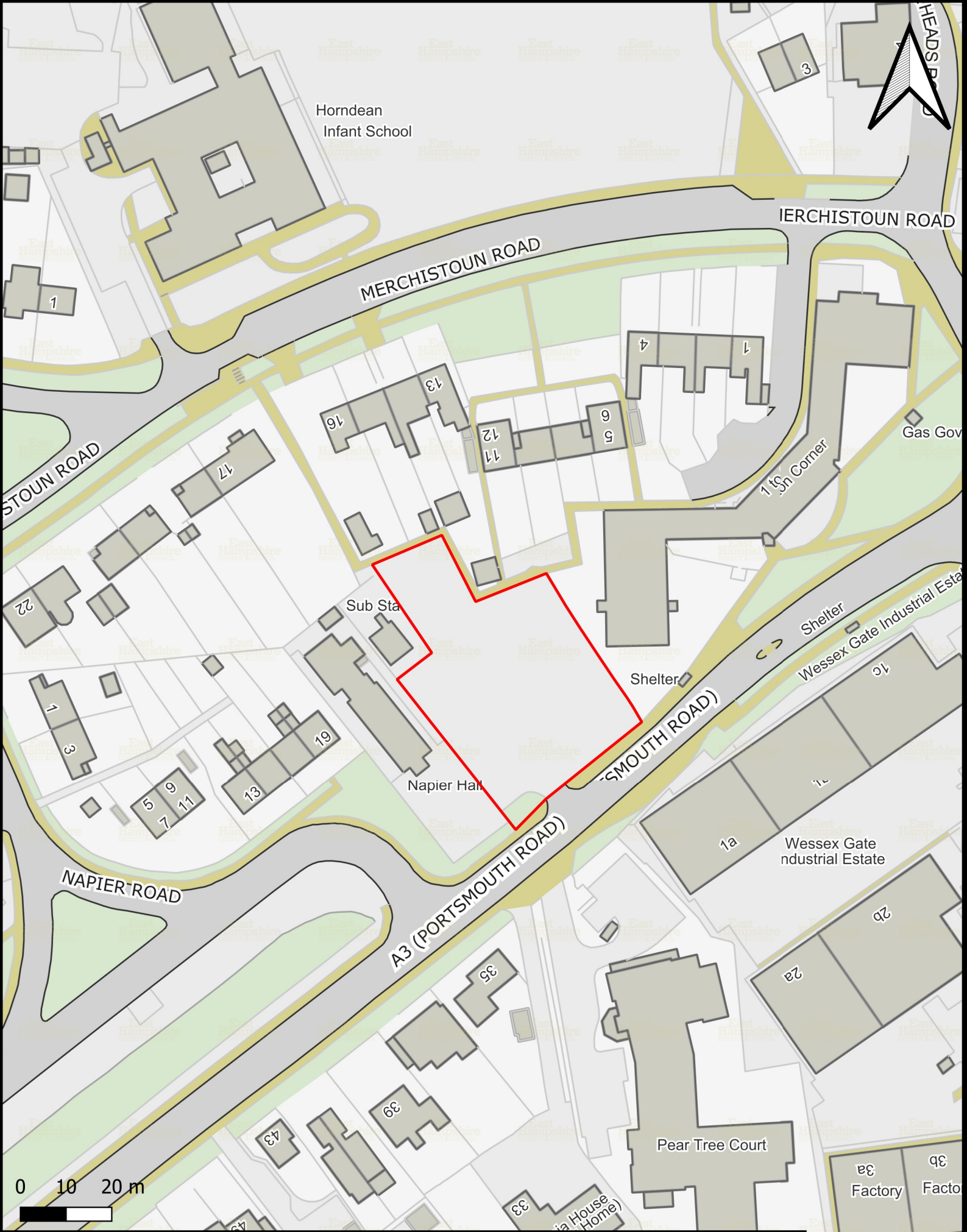
6

18

0 10 20 m



**Brownfield Land Register Part 1-
Blendworth Lane Car Park, Horndean
(BFL/005)**



Horndean Infant School

MERCHISTOUN ROAD

IERCHISTOUN ROAD

Sub Sta

Napier Hall

Shelter

Shelter

Wessex Gate Industrial Estate

Wessex Gate industrial Estate

Pear Tree Court

NAPIER ROAD

A3 (PORTSMOUTH ROAD)

0 10 20 m



**Brownfield Land Register Part 1- 54
Portsmouth Road, Horndean (BFL/006)**



Childerstone House

Pavilion

Bowling Green

Pavilion

Library

Skatepark

1 to 8
Lincoln Court

1 to 6
Chittlee View

Ajax House

Pond

LIPHOOK

CHITTLE MANOR

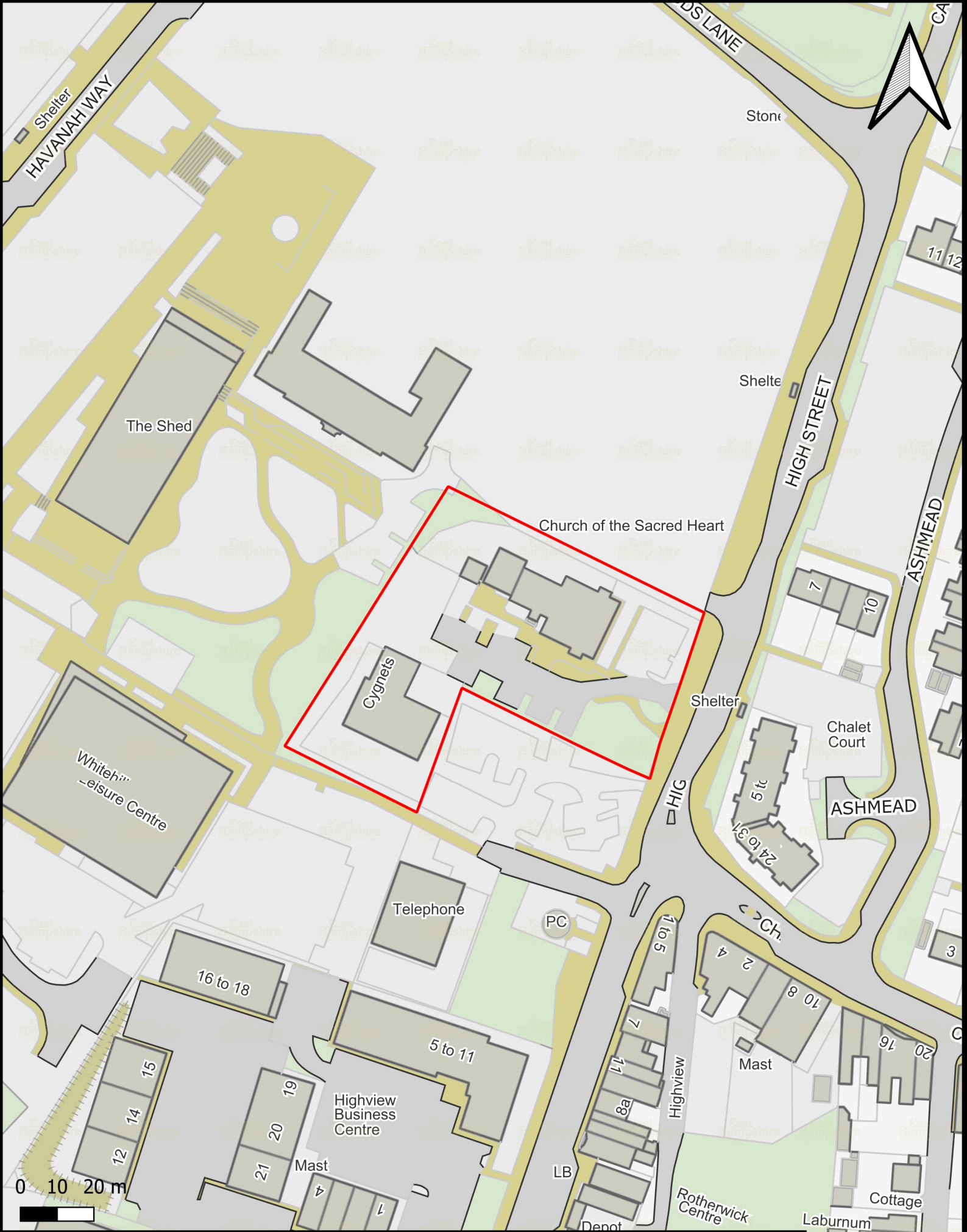
CHITTLE MANOR

Chittlee Manor
CHITTLE



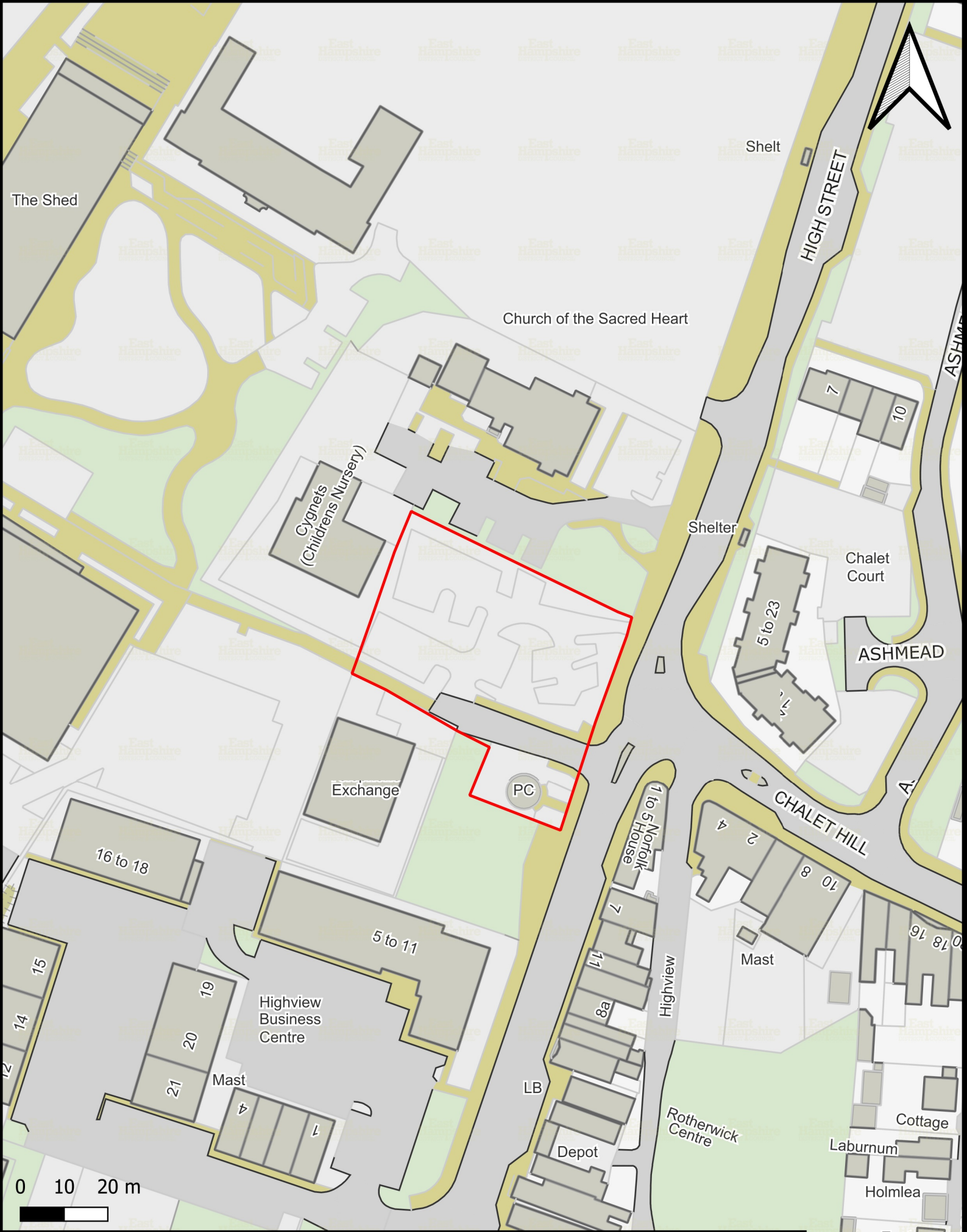
Brownfield Land Register Part 1- Ajax & Plowden House, Liphook (BFL/007)

Index



Brownfield Land Register Part 1- Sacred Heart Church and Nursery, Whitehill and Bordon (BFL/008)





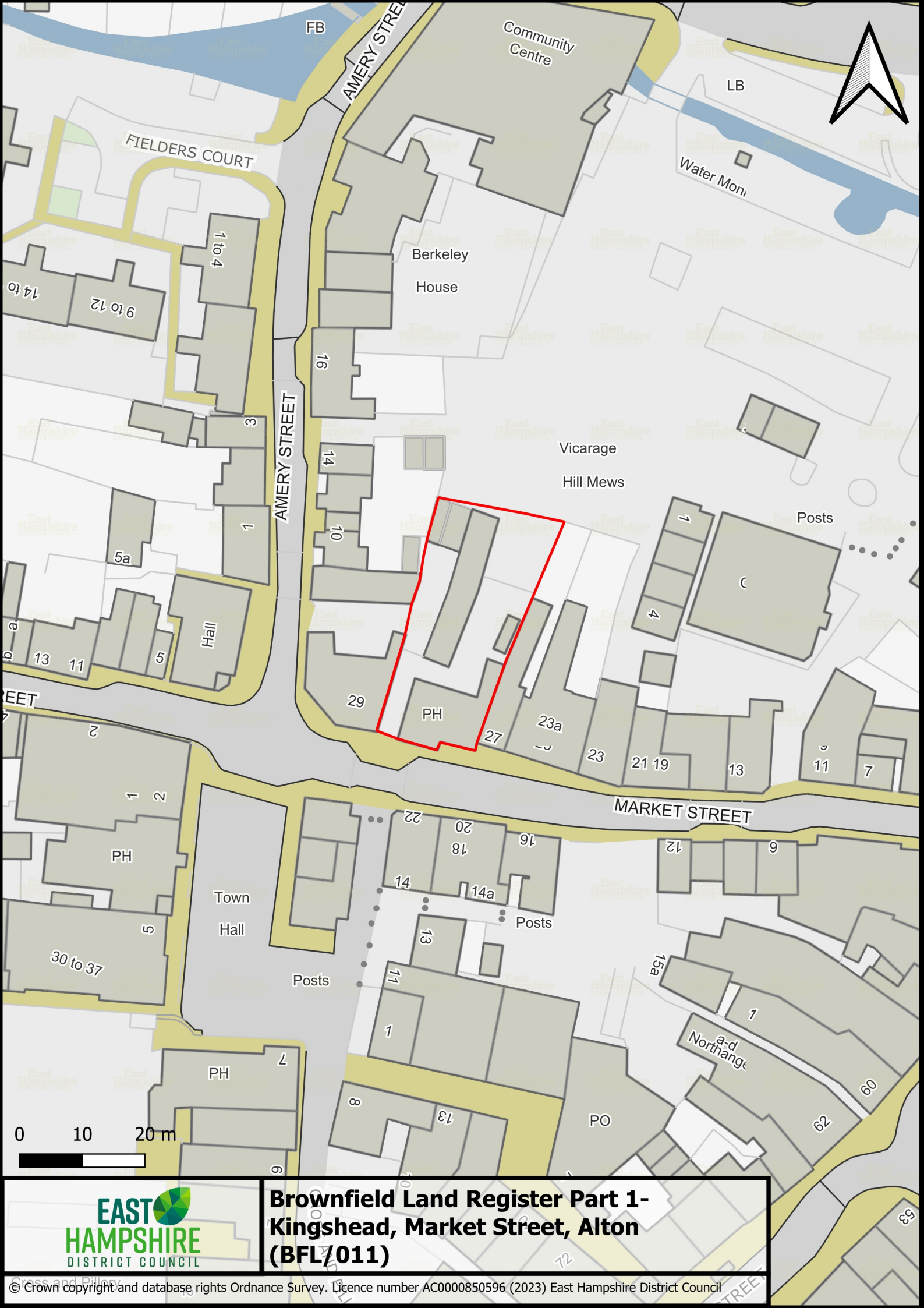
**Brownfield Land Register Part 1-
Guadaloupe Car Park, Whitehill and
Bordon (BFL/009)**





Brownfield Land Register Part 1- Mayfield House Care Home, Liphook (BFL/010)





FB

AMERY STREET

Community Centre

LB

FIELDERS COURT

Water Mon.

Berkeley House

AMERY STREET

Vicarage Hill Mews

Posts

Hall

PH

MARKET STREET

Town Hall

Posts

Posts

a-d Northange

PH

PO

0 10 20 m



Brownfield Land Register Part 1- Kingshead, Market Street, Alton (BFL/011)



**Brownfield Land Register Part 1- Land at
38-40 Station Road, Liphook (BFL/012)**

